

Самоустанавливающиеся шарикоподшипники

Технические характеристики

По вопросам продаж и поддержки обращайтесь:

Алматы (727)345-47-04
Ангарск (3955)60-70-56
Архангельск (8182)63-90-72
Астрахань (8512)99-46-04
Барнаул (3852)73-04-60
Белгород (4722)40-23-64
Благовещенск (4162)22-76-07
Брянск (4832)59-03-52
Владивосток (423)249-28-31
Владикавказ (8672)28-90-48
Владимир (4922)49-43-18
Волгоград (844)278-03-48
Вологда (8172)26-41-59
Воронеж (473)204-51-73
Екатеринбург (343)384-55-89

Иваново (4932)77-34-06
Ижевск (3412)26-03-58
Иркутск (395)279-98-46
Казань (843)206-01-48
Калининград (4012)72-03-81
Калуга (4842)92-23-67
Кемерово (3842)65-04-62
Киров (8332)68-02-04
Коломна (4966)23-41-49
Кострома (4942)77-07-48
Краснодар (861)203-40-90
Красноярск (391)204-63-61
Курск (4712)77-13-04
Курган (3522)50-90-47
Липецк (4742)52-20-81

Магнитогорск (3519)55-03-13
Москва (495)268-04-70
Мурманск (8152)59-64-93
Набережные Челны (8552)20-53-41
Нижний Новгород (831)429-08-12
Новокузнецк (3843)20-46-81
Ноябрьск (3496)41-32-12
Новосибирск (383)227-86-73
Омск (3812)21-46-40
Орел (4862)44-53-42
Оренбург (3532)37-68-04
Пенза (8412)22-31-16
Петрозаводск (8142)55-98-37
Псков (8112)59-10-37
Пермь (342)205-81-47

Ростов-на-Дону (863)308-18-15
Рязань (4912)46-61-64
Самара (846)206-03-16
Санкт-Петербург (812)309-46-40
Саратов (845)249-38-78
Севастополь (8692)22-31-93
Саранск (8342)22-96-24
Симферополь (3652)67-13-56
Смоленск (4812)29-41-54
Сочи (862)225-72-31
Ставрополь (8652)20-65-13
Сургут (3462)77-98-35
Сыктывкар (8212)25-95-17
Тамбов (4752)50-40-97
Тверь (4822)63-31-35

Тольятти (8482)63-91-07
Томск (3822)98-41-53
Тула (4872)33-79-87
Тюмень (3452)66-21-18
Ульяновск (8422)24-23-59
Улан-Удэ (3012)59-97-51
Уфа (347)229-48-12
Хабаровск (4212)92-98-04
Чебоксары (8352)28-53-07
Челябинск (351)202-03-61
Череповец (8202)49-02-64
Чита (3022)38-34-83
Якутск (4112)23-90-97
Ярославль (4852)69-52-93

Россия +7(495)268-04-70

Казахстан +7(727)345-47-04

Беларусь +(375)257-127-884

Узбекистан +998(71)205-18-59

Киргизия +996(312)96-26-47

эл.почта: swf@nt-rt.ru || сайт: <https://skf.nt-rt.ru/>



108 TN9

Self-aligning ball bearing

Self-aligning ball bearings have two rows of balls, a common sphered raceway in the outer ring and two deep uninterrupted raceway grooves in the inner ring. They are insensitive to angular misalignment of the shaft relative to the housing, which can be caused, for example, by shaft deflection.

- Accommodate static and dynamic misalignment
- Excellent high-speed performance
- Excellent light load performance
- Low friction

Overview

Dimensions

Bore diameter	8 mm
Outside diameter	22 mm
Width	7 mm

Properties

Bore type	Cylindrical
Cage	Non-metallic
Coating	Without
Locating feature, bearing outer ring	None
Lubricant	None
Material, bearing	Bearing steel
Radial internal clearance	CN
Relubrication feature	Without
Retaining feature, inner ring	None
Sealing	Without
Tolerance class	Normal



126 TN9

Self-aligning ball bearing

Self-aligning ball bearings have two rows of balls, a common sphered raceway in the outer ring and two deep uninterrupted raceway grooves in the inner ring. They are insensitive to angular misalignment of the shaft relative to the housing, which can be caused, for example, by shaft deflection.

- Accommodate static and dynamic misalignment
- Excellent high-speed performance
- Excellent light load performance
- Low friction

Overview

Dimensions

Bore diameter	6 mm
Outside diameter	19 mm
Width	6 mm

Properties

Bore type	Cylindrical
Cage	Non-metallic
Coating	Without
Locating feature, bearing outer ring	None
Lubricant	None
Material, bearing	Bearing steel
Radial internal clearance	CN
Relubrication feature	Without
Retaining feature, inner ring	None
Sealing	Without
Tolerance class	Normal

127 TN9

Self-aligning ball bearing

Self-aligning ball bearings have two rows of balls, a common sphered raceway in the outer ring and two deep uninterrupted raceway grooves in the inner ring. They are insensitive to angular misalignment of the shaft relative to the housing, which can be caused, for example, by shaft deflection.

- Accommodate static and dynamic misalignment
- Excellent high-speed performance
- Excellent light load performance
- Low friction



Overview

Dimensions

Bore diameter	7 mm
Outside diameter	22 mm
Width	7 mm

Properties

Bore type	Cylindrical
Cage	Non-metallic
Coating	Without
Locating feature, bearing outer ring	None
Lubricant	None
Material, bearing	Bearing steel
Radial internal clearance	CN
Relubrication feature	Without
Retaining feature, inner ring	None
Sealing	Without
Tolerance class	Normal

129 TN9

Self-aligning ball bearing

Self-aligning ball bearings have two rows of balls, a common sphered raceway in the outer ring and two deep uninterrupted raceway grooves in the inner ring. They are insensitive to angular misalignment of the shaft relative to the housing, which can be caused, for example, by shaft deflection.

- Accommodate static and dynamic misalignment
- Excellent high-speed performance
- Excellent light load performance
- Low friction



Overview

Dimensions

Bore diameter	9 mm
Outside diameter	26 mm
Width	8 mm

Properties

Bore type	Cylindrical
Cage	Non-metallic
Coating	Without
Locating feature, bearing outer ring	None
Lubricant	None
Material, bearing	Bearing steel
Radial internal clearance	CN
Relubrication feature	Without
Retaining feature, inner ring	None
Sealing	Without
Tolerance class	Normal



135 TN9

Self-aligning ball bearing

Self-aligning ball bearings have two rows of balls, a common sphered raceway in the outer ring and two deep uninterrupted raceway grooves in the inner ring. They are insensitive to angular misalignment of the shaft relative to the housing, which can be caused, for example, by shaft deflection.

- Accommodate static and dynamic misalignment
- Excellent high-speed performance
- Excellent light load performance
- Low friction

Overview

Dimensions

Bore diameter	5 mm
Outside diameter	19 mm
Width	6 mm

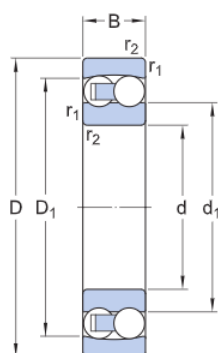
Properties

Bore type	Cylindrical
Coating	Without
Locating feature, bearing outer ring	None
Lubricant	None
Material, bearing	Bearing steel
Radial internal clearance	CN
Relubrication feature	Without
Retaining feature, inner ring	None
Sealing	Without
Tolerance class	Normal

Technical Specification

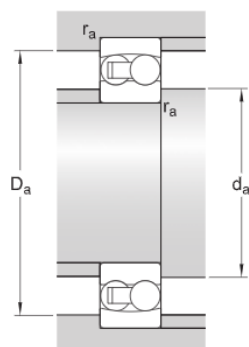
Bore type

Cylindrical



Dimensions

d	5 mm	Bore diameter
D	19 mm	Outside diameter
B	6 mm	Width
d ₁	≈ 10.3 mm	Shoulder diameter inner ring
D ₁	≈ 15.4 mm	Shoulder diameter outer ring
r _{1,2}	min. 0.3 mm	Chamfer dimension



Abutment dimensions

da	min. 7.4 mm	Abutment diameter shaft
Da	max. 16.6 mm	Abutment diameter housing
ra	max. 0.3 mm	Fillet radius

Calculation data

Basic dynamic load rating	C	2.51 kN
Basic static load rating	C ₀	0.48 kN
Fatigue load limit	P _u	0.025 kN
Reference speed		70 000 r/min

Limiting speed		45 000 r/min
Permissible angular misalignment	α	3 °
Calculation factor	k_r	0.045
Limiting value	e	0.33
Calculation factor	Y_0	2
Calculation factor	Y_1	1.9
Calculation factor	Y_2	3

Mass

Mass bearing	0.009 kg
--------------	----------



135 TN9

Self-aligning ball bearing

Self-aligning ball bearings have two rows of balls, a common sphered raceway in the outer ring and two deep uninterrupted raceway grooves in the inner ring. They are insensitive to angular misalignment of the shaft relative to the housing, which can be caused, for example, by shaft deflection.

- Accommodate static and dynamic misalignment
- Excellent high-speed performance
- Excellent light load performance
- Low friction

Overview

Dimensions

Bore diameter	5 mm
Outside diameter	19 mm
Width	6 mm

Properties

Bore type	Cylindrical
Coating	Without
Locating feature, bearing outer ring	None
Lubricant	None
Material, bearing	Bearing steel
Radial internal clearance	CN
Relubrication feature	Without
Retaining feature, inner ring	None
Sealing	Without
Tolerance class	Normal



1200 ETN9

Self-aligning ball bearing

Self-aligning ball bearings have two rows of balls, a common sphered raceway in the outer ring and two deep uninterrupted raceway grooves in the inner ring. They are insensitive to angular misalignment of the shaft relative to the housing, which can be caused, for example, by shaft deflection.

- Accommodate static and dynamic misalignment
- Excellent high-speed performance
- Excellent light load performance
- Low friction

Overview

Dimensions

Bore diameter	10 mm
Outside diameter	30 mm
Width	9 mm

Properties

Bore type	Cylindrical
Cage	Non-metallic
Coating	Without
Locating feature, bearing outer ring	None
Lubricant	None
Material, bearing	Bearing steel
Radial internal clearance	CN
Relubrication feature	Without
Retaining feature, inner ring	None
Sealing	Without
Tolerance class	Normal

1201 ETN9

Self-aligning ball bearing

Self-aligning ball bearings have two rows of balls, a common sphered raceway in the outer ring and two deep uninterrupted raceway grooves in the inner ring. They are insensitive to angular misalignment of the shaft relative to the housing, which can be caused, for example, by shaft deflection.

- Accommodate static and dynamic misalignment
- Excellent high-speed performance
- Excellent light load performance
- Low friction



Overview

Dimensions

Bore diameter	12 mm
Outside diameter	32 mm
Width	10 mm

Properties

Bore type	Cylindrical
Cage	Non-metallic
Coating	Without
Locating feature, bearing outer ring	None
Lubricant	None
Material, bearing	Bearing steel
Radial internal clearance	CN
Relubrication feature	Without
Retaining feature, inner ring	None
Sealing	Without
Tolerance class	Normal



1202 ETN9

Self-aligning ball bearing

Self-aligning ball bearings have two rows of balls, a common sphered raceway in the outer ring and two deep uninterrupted raceway grooves in the inner ring. They are insensitive to angular misalignment of the shaft relative to the housing, which can be caused, for example, by shaft deflection.

- Accommodate static and dynamic misalignment
- Excellent high-speed performance
- Excellent light load performance
- Low friction

Overview

Dimensions

Bore diameter	15 mm
Outside diameter	35 mm
Width	11 mm

Properties

Bore type	Cylindrical
Cage	Non-metallic
Coating	Without
Locating feature, bearing outer ring	None
Lubricant	None
Material, bearing	Bearing steel
Radial internal clearance	CN
Relubrication feature	Without
Retaining feature, inner ring	None
Sealing	Without
Tolerance class	Normal

1203 ETN9

Self-aligning ball bearing

Self-aligning ball bearings have two rows of balls, a common sphered raceway in the outer ring and two deep uninterrupted raceway grooves in the inner ring. They are insensitive to angular misalignment of the shaft relative to the housing, which can be caused, for example, by shaft deflection.

- Accommodate static and dynamic misalignment
- Excellent high-speed performance
- Excellent light load performance
- Low friction



Overview

Dimensions

Bore diameter	17 mm
Outside diameter	40 mm
Width	12 mm

Properties

Bore type	Cylindrical
Cage	Non-metallic
Coating	Without
Locating feature, bearing outer ring	None
Lubricant	None
Material, bearing	Bearing steel
Radial internal clearance	CN
Relubrication feature	Without
Retaining feature, inner ring	None
Sealing	Without
Tolerance class	Normal



1204 EKTN9

Self-aligning ball bearing with tapered bore

Self-aligning ball bearings, with a tapered bore, have two rows of balls, a common sphered raceway in the outer ring and two deep uninterrupted raceway grooves in the inner ring. They are insensitive to angular misalignment of the shaft relative to the housing, which can be caused, for example, by shaft deflection. The tapered bore facilitates ease of mounting via adapter sleeves or withdrawal sleeves.

- Ease of mounting via adapter sleeves or withdrawal sleeves
- Accommodate static and dynamic misalignment
- Excellent high-speed performance
- Excellent light load performance
- Low friction

Overview

Dimensions

Bore diameter	20 mm
Outside diameter	47 mm
Width	14 mm

Properties

Bore type	Tapered 1:12
Cage	Non-metallic
Coating	Without
Locating feature, bearing outer ring	None
Lubricant	None
Material, bearing	Bearing steel
Radial internal clearance	CN
Relubrication feature	Without
Retaining feature, inner ring	None
Sealing	Without
Tolerance class	Normal



1204 ETN9

Self-aligning ball bearing

Self-aligning ball bearings have two rows of balls, a common sphered raceway in the outer ring and two deep uninterrupted raceway grooves in the inner ring. They are insensitive to angular misalignment of the shaft relative to the housing, which can be caused, for example, by shaft deflection.

- Accommodate static and dynamic misalignment
- Excellent high-speed performance
- Excellent light load performance
- Low friction

Overview

Dimensions

Bore diameter	20 mm
Outside diameter	47 mm
Width	14 mm

Properties

Bore type	Cylindrical
Cage	Non-metallic
Coating	Without
Locating feature, bearing outer ring	None
Lubricant	None
Material, bearing	Bearing steel
Radial internal clearance	CN
Relubrication feature	Without
Retaining feature, inner ring	None
Sealing	Without
Tolerance class	Normal



1205 EKTN9

Self-aligning ball bearing with tapered bore

Self-aligning ball bearings, with a tapered bore, have two rows of balls, a common sphered raceway in the outer ring and two deep uninterrupted raceway grooves in the inner ring. They are insensitive to angular misalignment of the shaft relative to the housing, which can be caused, for example, by shaft deflection. The tapered bore facilitates ease of mounting via adapter sleeves or withdrawal sleeves.

- Ease of mounting via adapter sleeves or withdrawal sleeves
- Accommodate static and dynamic misalignment
- Excellent high-speed performance
- Excellent light load performance
- Low friction

Overview

Dimensions

Bore diameter	25 mm
Outside diameter	52 mm
Width	15 mm

Properties

Bore type	Tapered 1:12
Cage	Non-metallic
Coating	Without
Locating feature, bearing outer ring	None
Lubricant	None
Material, bearing	Bearing steel
Radial internal clearance	CN
Relubrication feature	Without
Retaining feature, inner ring	None
Sealing	Without
Tolerance class	Normal



1205 EM

Self-aligning ball bearing

Self-aligning ball bearings have two rows of balls, a common sphered raceway in the outer ring and two deep uninterrupted raceway grooves in the inner ring. They are insensitive to angular misalignment of the shaft relative to the housing, which can be caused, for example, by shaft deflection.

- Accommodate static and dynamic misalignment
- Excellent high-speed performance
- Excellent light load performance
- Low friction

Overview

Dimensions

Bore diameter	25 mm
Outside diameter	52 mm
Width	15 mm

Properties

Bore type	Cylindrical
Cage	Machined metal
Coating	Without
Locating feature, bearing outer ring	None
Lubricant	None
Material, bearing	Bearing steel
Radial internal clearance	CN
Relubrication feature	Without
Retaining feature, inner ring	None
Sealing	Without
Tolerance class	Normal

1205 ETN9

Self-aligning ball bearing

Self-aligning ball bearings have two rows of balls, a common sphered raceway in the outer ring and two deep uninterrupted raceway grooves in the inner ring. They are insensitive to angular misalignment of the shaft relative to the housing, which can be caused, for example, by shaft deflection.

- Accommodate static and dynamic misalignment
- Excellent high-speed performance
- Excellent light load performance
- Low friction



Overview

Dimensions

Bore diameter	25 mm
Outside diameter	52 mm
Width	15 mm

Properties

Bore type	Cylindrical
Cage	Non-metallic
Coating	Without
Locating feature, bearing outer ring	None
Lubricant	None
Material, bearing	Bearing steel
Radial internal clearance	CN
Relubrication feature	Without
Retaining feature, inner ring	None
Sealing	Without
Tolerance class	Normal



1301 EM

Self-aligning ball bearing

Self-aligning ball bearings have two rows of balls, a common sphered raceway in the outer ring and two deep uninterrupted raceway grooves in the inner ring. They are insensitive to angular misalignment of the shaft relative to the housing, which can be caused, for example, by shaft deflection.

- Accommodate static and dynamic misalignment
- Excellent high-speed performance
- Excellent light load performance
- Low friction

Overview

Dimensions

Bore diameter	12 mm
Outside diameter	37 mm
Width	12 mm

Properties

Bore type	Cylindrical
Cage	Machined metal
Coating	Without
Locating feature, bearing outer ring	None
Lubricant	None
Material, bearing	Bearing steel
Radial internal clearance	CN
Relubrication feature	Without
Retaining feature, inner ring	None
Sealing	Without
Tolerance class	Normal

1301 ETN9

Self-aligning ball bearing

Self-aligning ball bearings have two rows of balls, a common sphered raceway in the outer ring and two deep uninterrupted raceway grooves in the inner ring. They are insensitive to angular misalignment of the shaft relative to the housing, which can be caused, for example, by shaft deflection.

- Accommodate static and dynamic misalignment
- Excellent high-speed performance
- Excellent light load performance
- Low friction



Overview

Dimensions

Bore diameter	12 mm
Outside diameter	37 mm
Width	12 mm

Properties

Bore type	Cylindrical
Cage	Non-metallic
Coating	Without
Locating feature, bearing outer ring	None
Lubricant	None
Material, bearing	Bearing steel
Radial internal clearance	CN
Relubrication feature	Without
Retaining feature, inner ring	None
Sealing	Without
Tolerance class	Normal



1302 ETN9

Self-aligning ball bearing

Self-aligning ball bearings have two rows of balls, a common sphered raceway in the outer ring and two deep uninterrupted raceway grooves in the inner ring. They are insensitive to angular misalignment of the shaft relative to the housing, which can be caused, for example, by shaft deflection.

- Accommodate static and dynamic misalignment
- Excellent high-speed performance
- Excellent light load performance
- Low friction

Overview

Dimensions

Bore diameter	15 mm
Outside diameter	42 mm
Width	13 mm

Properties

Bore type	Cylindrical
Cage	Non-metallic
Coating	Without
Locating feature, bearing outer ring	None
Lubricant	None
Material, bearing	Bearing steel
Radial internal clearance	CN
Relubrication feature	Without
Retaining feature, inner ring	None
Sealing	Without
Tolerance class	Normal



1303 EM

Self-aligning ball bearing

Self-aligning ball bearings have two rows of balls, a common sphered raceway in the outer ring and two deep uninterrupted raceway grooves in the inner ring. They are insensitive to angular misalignment of the shaft relative to the housing, which can be caused, for example, by shaft deflection.

- Accommodate static and dynamic misalignment
- Excellent high-speed performance
- Excellent light load performance
- Low friction

Overview

Dimensions

Bore diameter	17 mm
Outside diameter	47 mm
Width	14 mm

Properties

Bore type	Cylindrical
Cage	Machined metal
Coating	Without
Locating feature, bearing outer ring	None
Lubricant	None
Material, bearing	Bearing steel
Radial internal clearance	CN
Relubrication feature	Without
Retaining feature, inner ring	None
Sealing	Without
Tolerance class	Normal



1303 ETN9

Self-aligning ball bearing

Self-aligning ball bearings have two rows of balls, a common sphered raceway in the outer ring and two deep uninterrupted raceway grooves in the inner ring. They are insensitive to angular misalignment of the shaft relative to the housing, which can be caused, for example, by shaft deflection.

- Accommodate static and dynamic misalignment
- Excellent high-speed performance
- Excellent light load performance
- Low friction

Overview

Dimensions

Bore diameter	17 mm
Outside diameter	47 mm
Width	14 mm

Properties

Bore type	Cylindrical
Cage	Non-metallic
Coating	Without
Locating feature, bearing outer ring	None
Lubricant	None
Material, bearing	Bearing steel
Radial internal clearance	CN
Relubrication feature	Without
Retaining feature, inner ring	None
Sealing	Without
Tolerance class	Normal



1304 ETN9

Self-aligning ball bearing

Self-aligning ball bearings have two rows of balls, a common sphered raceway in the outer ring and two deep uninterrupted raceway grooves in the inner ring. They are insensitive to angular misalignment of the shaft relative to the housing, which can be caused, for example, by shaft deflection.

- Accommodate static and dynamic misalignment
- Excellent high-speed performance
- Excellent light load performance
- Low friction

Overview

Dimensions

Bore diameter	20 mm
Outside diameter	52 mm
Width	15 mm

Properties

Bore type	Cylindrical
Cage	Non-metallic
Coating	Without
Locating feature, bearing outer ring	None
Lubricant	None
Material, bearing	Bearing steel
Radial internal clearance	CN
Relubrication feature	Without
Retaining feature, inner ring	None
Sealing	Without
Tolerance class	Normal



1305 EKTN9

Self-aligning ball bearing with tapered bore

Self-aligning ball bearings, with a tapered bore, have two rows of balls, a common sphered raceway in the outer ring and two deep uninterrupted raceway grooves in the inner ring. They are insensitive to angular misalignment of the shaft relative to the housing, which can be caused, for example, by shaft deflection. The tapered bore facilitates ease of mounting via adapter sleeves or withdrawal sleeves.

- Ease of mounting via adapter sleeves or withdrawal sleeves
- Accommodate static and dynamic misalignment
- Excellent high-speed performance
- Excellent light load performance
- Low friction

Overview

Dimensions

Bore diameter	25 mm
Outside diameter	62 mm
Width	17 mm

Properties

Bore type	Tapered 1:12
Cage	Non-metallic
Coating	Without
Locating feature, bearing outer ring	None
Lubricant	None
Material, bearing	Bearing steel
Radial internal clearance	CN
Relubrication feature	Without
Retaining feature, inner ring	None
Sealing	Without
Tolerance class	Normal



1305 ETN9

Self-aligning ball bearing

Self-aligning ball bearings have two rows of balls, a common sphered raceway in the outer ring and two deep uninterrupted raceway grooves in the inner ring. They are insensitive to angular misalignment of the shaft relative to the housing, which can be caused, for example, by shaft deflection.

- Accommodate static and dynamic misalignment
- Excellent high-speed performance
- Excellent light load performance
- Low friction

Overview

Dimensions

Bore diameter	25 mm
Outside diameter	62 mm
Width	17 mm

Properties

Bore type	Cylindrical
Cage	Non-metallic
Coating	Without
Locating feature, bearing outer ring	None
Lubricant	None
Material, bearing	Bearing steel
Radial internal clearance	CN
Relubrication feature	Without
Retaining feature, inner ring	None
Sealing	Without
Tolerance class	Normal

2200 E-2RS1TN9

Self-aligning ball bearing with seals on both sides

Self-aligning ball bearings, with seals on both sides, have two rows of balls, a common sphered raceway in the outer ring and two deep uninterrupted raceway grooves in the inner ring. They are insensitive to angular misalignment of the shaft relative to the housing. The integral sealing can significantly prolong bearing service life because it keeps lubricant in the bearings and contaminants out.

- Accommodate static and dynamic misalignment
- Excellent high-speed performance
- Excellent light load performance
- Low friction
- Integral sealing results in reduced maintenance requirements and prolonged bearing service life



Overview

Dimensions

Bore diameter	10 mm
Outside diameter	30 mm
Width	14 mm

Properties

Bore type	Cylindrical
Cage	Non-metallic
Coating	Without
Locating feature, bearing outer ring	None
Lubricant	Grease
Material, bearing	Bearing steel
Radial internal clearance	CN
Relubrication feature	Without
Retaining feature, inner ring	None
Sealing	Seal on both sides
Sealing type	Contact
Tolerance class	Normal

2200 ETN9

Self-aligning ball bearing

Self-aligning ball bearings have two rows of balls, a common sphered raceway in the outer ring and two deep uninterrupted raceway grooves in the inner ring. They are insensitive to angular misalignment of the shaft relative to the housing, which can be caused, for example, by shaft deflection.

- Accommodate static and dynamic misalignment
- Excellent high-speed performance
- Excellent light load performance
- Low friction



Overview

Dimensions

Bore diameter	10 mm
Outside diameter	30 mm
Width	14 mm

Properties

Bore type	Cylindrical
Cage	Non-metallic
Coating	Without
Locating feature, bearing outer ring	None
Lubricant	None
Material, bearing	Bearing steel
Radial internal clearance	CN
Relubrication feature	Without
Retaining feature, inner ring	None
Sealing	Without
Tolerance class	Normal

2201 E-2RS1TN9

Self-aligning ball bearing with seals on both sides

Self-aligning ball bearings, with seals on both sides, have two rows of balls, a common sphered raceway in the outer ring and two deep uninterrupted raceway grooves in the inner ring. They are insensitive to angular misalignment of the shaft relative to the housing. The integral sealing can significantly prolong bearing service life because it keeps lubricant in the bearings and contaminants out.

- Accommodate static and dynamic misalignment
- Excellent high-speed performance
- Excellent light load performance
- Low friction
- Integral sealing results in reduced maintenance requirements and prolonged bearing service life



Overview

Dimensions

Bore diameter	12 mm
Outside diameter	32 mm
Width	14 mm

Properties

Bore type	Cylindrical
Cage	Non-metallic
Coating	Without
Locating feature, bearing outer ring	None
Lubricant	Grease
Material, bearing	Bearing steel
Radial internal clearance	CN
Relubrication feature	Without
Retaining feature, inner ring	None
Sealing	Seal on both sides
Sealing type	Contact
Tolerance class	Normal

2201 ETN9

Self-aligning ball bearing

Self-aligning ball bearings have two rows of balls, a common sphered raceway in the outer ring and two deep uninterrupted raceway grooves in the inner ring. They are insensitive to angular misalignment of the shaft relative to the housing, which can be caused, for example, by shaft deflection.

- Accommodate static and dynamic misalignment
- Excellent high-speed performance
- Excellent light load performance
- Low friction



Overview

Dimensions

Bore diameter	12 mm
Outside diameter	32 mm
Width	14 mm

Properties

Bore type	Cylindrical
Cage	Non-metallic
Coating	Without
Locating feature, bearing outer ring	None
Lubricant	None
Material, bearing	Bearing steel
Radial internal clearance	CN
Relubrication feature	Without
Retaining feature, inner ring	None
Sealing	Without
Tolerance class	Normal

2202 E-2RS1TN9

Self-aligning ball bearing with seals on both sides

Self-aligning ball bearings, with seals on both sides, have two rows of balls, a common sphered raceway in the outer ring and two deep uninterrupted raceway grooves in the inner ring. They are insensitive to angular misalignment of the shaft relative to the housing. The integral sealing can significantly prolong bearing service life because it keeps lubricant in the bearings and contaminants out.

- Accommodate static and dynamic misalignment
- Excellent high-speed performance
- Excellent light load performance
- Low friction
- Integral sealing results in reduced maintenance requirements and prolonged bearing service life



Overview

Dimensions

Bore diameter	15 mm
Outside diameter	35 mm
Width	14 mm

Properties

Bore type	Cylindrical
Cage	Non-metallic
Coating	Without
Locating feature, bearing outer ring	None
Lubricant	Grease
Material, bearing	Bearing steel
Radial internal clearance	CN
Relubrication feature	Without
Retaining feature, inner ring	None
Sealing	Seal on both sides
Sealing type	Contact
Tolerance class	Normal

2202 ETN9

Self-aligning ball bearing

Self-aligning ball bearings have two rows of balls, a common sphered raceway in the outer ring and two deep uninterrupted raceway grooves in the inner ring. They are insensitive to angular misalignment of the shaft relative to the housing, which can be caused, for example, by shaft deflection.

- Accommodate static and dynamic misalignment
- Excellent high-speed performance
- Excellent light load performance
- Low friction



Overview

Dimensions

Bore diameter	15 mm
Outside diameter	35 mm
Width	14 mm

Properties

Bore type	Cylindrical
Cage	Non-metallic
Coating	Without
Locating feature, bearing outer ring	None
Lubricant	None
Material, bearing	Bearing steel
Radial internal clearance	CN
Relubrication feature	Without
Retaining feature, inner ring	None
Sealing	Without
Tolerance class	Normal

2203 E-2RS1TN9

Self-aligning ball bearing with seals on both sides

Self-aligning ball bearings, with seals on both sides, have two rows of balls, a common sphered raceway in the outer ring and two deep uninterrupted raceway grooves in the inner ring. They are insensitive to angular misalignment of the shaft relative to the housing. The integral sealing can significantly prolong bearing service life because it keeps lubricant in the bearings and contaminants out.

- Accommodate static and dynamic misalignment
- Excellent high-speed performance
- Excellent light load performance
- Low friction
- Integral sealing results in reduced maintenance requirements and prolonged bearing service life



Overview

Dimensions

Bore diameter	17 mm
Outside diameter	40 mm
Width	16 mm

Properties

Bore type	Cylindrical
Cage	Non-metallic
Coating	Without
Locating feature, bearing outer ring	None
Lubricant	Grease
Material, bearing	Bearing steel
Radial internal clearance	CN
Relubrication feature	Without
Retaining feature, inner ring	None
Sealing	Seal on both sides
Sealing type	Contact
Tolerance class	Normal

2204 E-2RS1TN9

Self-aligning ball bearing with seals on both sides

Self-aligning ball bearings, with seals on both sides, have two rows of balls, a common sphered raceway in the outer ring and two deep uninterrupted raceway grooves in the inner ring. They are insensitive to angular misalignment of the shaft relative to the housing. The integral sealing can significantly prolong bearing service life because it keeps lubricant in the bearings and contaminants out.

- Accommodate static and dynamic misalignment
- Excellent high-speed performance
- Excellent light load performance
- Low friction
- Integral sealing results in reduced maintenance requirements and prolonged bearing service life



Overview

Dimensions

Bore diameter	20 mm
Outside diameter	47 mm
Width	18 mm

Properties

Bore type	Cylindrical
Cage	Non-metallic
Coating	Without
Locating feature, bearing outer ring	None
Lubricant	Grease
Material, bearing	Bearing steel
Radial internal clearance	CN
Relubrication feature	Without
Retaining feature, inner ring	None
Sealing	Seal on both sides
Sealing type	Contact
Tolerance class	Normal

2204 ETN9

Self-aligning ball bearing

Self-aligning ball bearings have two rows of balls, a common sphered raceway in the outer ring and two deep uninterrupted raceway grooves in the inner ring. They are insensitive to angular misalignment of the shaft relative to the housing, which can be caused, for example, by shaft deflection.

- Accommodate static and dynamic misalignment
- Excellent high-speed performance
- Excellent light load performance
- Low friction



Overview

Dimensions

Bore diameter	20 mm
Outside diameter	47 mm
Width	18 mm

Properties

Bore type	Cylindrical
Cage	Non-metallic
Coating	Without
Locating feature, bearing outer ring	None
Lubricant	None
Material, bearing	Bearing steel
Radial internal clearance	CN
Relubrication feature	Without
Retaining feature, inner ring	None
Sealing	Without
Tolerance class	Normal

2205 E-2RS1KTN9

Self-aligning ball bearing with tapered bore and seals on both sides



Self-aligning ball bearings, with a tapered bore and seals on both sides, have two rows of balls, a common sphered raceway in the outer ring and two deep uninterrupted raceway grooves in the inner ring. They are insensitive to angular misalignment of the shaft relative to the housing. The tapered bore facilitates ease of mounting via adapter/withdrawal sleeves. The integral sealing can prolong bearing service life by keeping lubricant in the bearings and contaminants out.

- Ease of mounting via adapter/withdrawal sleeves
- Accommodate static and dynamic misalignment
- Excellent high-speed and light load performance
- Low friction
- Integral sealing results in reduced maintenance requirements and prolonged bearing service life

Overview

Dimensions

Bore diameter	25 mm
Outside diameter	52 mm
Width	18 mm

Properties

Bore type	Tapered 1:12
Cage	Non-metallic
Coating	Without
Locating feature, bearing outer ring	None
Lubricant	Grease
Material, bearing	Bearing steel
Radial internal clearance	CN
Relubrication feature	Without
Retaining feature, inner ring	None
Sealing	Seal on both sides
Sealing type	Contact
Tolerance class	Normal



2301

Self-aligning ball bearing

Self-aligning ball bearings have two rows of balls, a common sphered raceway in the outer ring and two deep uninterrupted raceway grooves in the inner ring. They are insensitive to angular misalignment of the shaft relative to the housing, which can be caused, for example, by shaft deflection.

- Accommodate static and dynamic misalignment
- Excellent high-speed performance
- Excellent light load performance
- Low friction

Overview

Dimensions

Bore diameter	12 mm
Outside diameter	37 mm
Width	17 mm

Properties

Bore type	Cylindrical
Cage	Sheet metal
Coating	Without
Locating feature, bearing outer ring	None
Lubricant	None
Material, bearing	Bearing steel
Radial internal clearance	CN
Relubrication feature	Without
Retaining feature, inner ring	None
Sealing	Without
Tolerance class	Normal

2302

Self-aligning ball bearing

Self-aligning ball bearings have two rows of balls, a common sphered raceway in the outer ring and two deep uninterrupted raceway grooves in the inner ring. They are insensitive to angular misalignment of the shaft relative to the housing, which can be caused, for example, by shaft deflection.

- Accommodate static and dynamic misalignment
- Excellent high-speed performance
- Excellent light load performance
- Low friction



Overview

Dimensions

Bore diameter	15 mm
Outside diameter	42 mm
Width	17 mm

Properties

Bore type	Cylindrical
Cage	Sheet metal
Coating	Without
Locating feature, bearing outer ring	None
Lubricant	None
Material, bearing	Bearing steel
Radial internal clearance	CN
Relubrication feature	Without
Retaining feature, inner ring	None
Sealing	Without
Tolerance class	Normal

2302 E-2RS1TN9

Self-aligning ball bearing with seals on both sides

Self-aligning ball bearings, with seals on both sides, have two rows of balls, a common sphered raceway in the outer ring and two deep uninterrupted raceway grooves in the inner ring. They are insensitive to angular misalignment of the shaft relative to the housing. The integral sealing can significantly prolong bearing service life because it keeps lubricant in the bearings and contaminants out.

- Accommodate static and dynamic misalignment
- Excellent high-speed performance
- Excellent light load performance
- Low friction
- Integral sealing results in reduced maintenance requirements and prolonged bearing service life



Overview

Dimensions

Bore diameter	15 mm
Outside diameter	42 mm
Width	17 mm

Properties

Bore type	Cylindrical
Cage	Non-metallic
Coating	Without
Locating feature, bearing outer ring	None
Lubricant	Grease
Material, bearing	Bearing steel
Radial internal clearance	CN
Relubrication feature	Without
Retaining feature, inner ring	None
Sealing	Seal on both sides
Sealing type	Contact
Tolerance class	Normal

2304 E-2RS1TN9

Self-aligning ball bearing with seals on both sides

Self-aligning ball bearings, with seals on both sides, have two rows of balls, a common sphered raceway in the outer ring and two deep uninterrupted raceway grooves in the inner ring. They are insensitive to angular misalignment of the shaft relative to the housing. The integral sealing can significantly prolong bearing service life because it keeps lubricant in the bearings and contaminants out.

- Accommodate static and dynamic misalignment
- Excellent high-speed performance
- Excellent light load performance
- Low friction
- Integral sealing results in reduced maintenance requirements and prolonged bearing service life



Overview

Dimensions

Bore diameter	20 mm
Outside diameter	52 mm
Width	21 mm

Properties

Bore type	Cylindrical
Cage	Non-metallic
Coating	Without
Locating feature, bearing outer ring	None
Lubricant	Grease
Material, bearing	Bearing steel
Radial internal clearance	CN
Relubrication feature	Without
Retaining feature, inner ring	None
Sealing	Seal on both sides
Sealing type	Contact
Tolerance class	Normal



2304 M

Self-aligning ball bearing

Self-aligning ball bearings have two rows of balls, a common sphered raceway in the outer ring and two deep uninterrupted raceway grooves in the inner ring. They are insensitive to angular misalignment of the shaft relative to the housing, which can be caused, for example, by shaft deflection.

- Accommodate static and dynamic misalignment
- Excellent high-speed performance
- Excellent light load performance
- Low friction

Overview

Dimensions

Bore diameter	20 mm
Outside diameter	52 mm
Width	21 mm

Properties

Bore type	Cylindrical
Cage	Machined metal
Coating	Without
Locating feature, bearing outer ring	None
Lubricant	None
Material, bearing	Bearing steel
Radial internal clearance	CN
Relubrication feature	Without
Retaining feature, inner ring	None
Sealing	Without
Tolerance class	Normal

2304 TN9

Self-aligning ball bearing

Self-aligning ball bearings have two rows of balls, a common sphered raceway in the outer ring and two deep uninterrupted raceway grooves in the inner ring. They are insensitive to angular misalignment of the shaft relative to the housing, which can be caused, for example, by shaft deflection.

- Accommodate static and dynamic misalignment
- Excellent high-speed performance
- Excellent light load performance
- Low friction



Overview

Dimensions

Bore diameter	20 mm
Outside diameter	52 mm
Width	21 mm

Properties

Bore type	Cylindrical
Cage	Non-metallic
Coating	Without
Locating feature, bearing outer ring	None
Lubricant	None
Material, bearing	Bearing steel
Radial internal clearance	CN
Relubrication feature	Without
Retaining feature, inner ring	None
Sealing	Without
Tolerance class	Normal



По вопросам продаж и поддержки обращайтесь:				
Алматы (727)345-47-04 Ангарск (3955)60-70-56 Архангельск (8182)63-90-72 Астрахань (8512)99-46-04 Барнаул (3852)73-04-60 Белгород (4722)40-23-64 Благовещенск (4162)22-76-07 Брянск (4832)59-03-52 Владивосток (423)249-28-31 Владикавказ (8672)28-90-48 Владимир (4922)49-43-18 Волгоград (844)278-03-48 Вологда (8172)26-41-59 Воронеж (473)204-51-73 Екатеринбург (343)384-55-89	Иваново (4932)77-34-06 Ижевск (3412)26-03-58 Иркутск (395)279-98-46 Казань (843)206-01-48 Калининград (4012)72-03-81 Калуга (4842)92-23-67 Кемерово (3842)65-04-62 Киров (8332)68-02-04 Коломна (4966)23-41-49 Кострома (4942)77-07-48 Краснодар (861)203-40-90 Красноярск (391)204-63-61 Курск (4712)77-13-04 Курган (3522)50-90-47 Липецк (4742)52-20-81	Магнитогорск (3519)55-03-13 Москва (495)268-04-70 Мурманск (8152)59-64-93 Набережные Челны (8552)20-53-41 Нижний Новгород (831)429-08-12 Новокузнецк (3843)20-46-81 Ноябрьск (3496)41-32-12 Новосибирск (383)227-86-73 Омск (3812)21-46-40 Орел (4862)44-53-42 Оренбург (3532)37-68-04 Пенза (8412)22-31-16 Петрозаводск (8142)55-98-37 Псков (8112)59-10-37 Пермь (342)205-81-47	Ростов-на-Дону (863)308-18-15 Рязань (4912)46-61-64 Самара (846)206-03-16 Санкт-Петербург (812)309-46-40 Саратов (845)249-38-78 Севастополь (8692)22-31-93 Саранск (8342)22-96-24 Симферополь (3652)67-13-56 Смоленск (4812)29-41-54 Сочи (862)225-72-31 Ставрополь (8652)20-65-13 Сургут (3462)77-98-35 Сыктывкар (8212)25-95-17 Тамбов (4752)50-40-97 Тверь (4822)63-31-35	Тольятти (8482)63-91-07 Томск (3822)98-41-53 Тула (4872)33-79-87 Тюмень (3452)66-21-18 Ульяновск (8422)24-23-59 Улан-Удэ (3012)59-97-51 Уфа (347)229-48-12 Хабаровск (4212)92-98-04 Чебоксары (8352)28-53-07 Челябинск (351)202-03-61 Череповец (8202)49-02-64 Чита (3022)38-34-83 Якутск (4112)23-90-97 Ярославль (4852)69-52-93
Россия +7(495)268-04-70	Казахстан +7(727)345-47-04	Беларусь +(375)257-127-884	Узбекистан +998(71)205-18-59	Киргизия +996(312)96-26-47

эл.почта: swf@nt-rt.ru || сайт: <https://skf.nt-rt.ru/>